



HVE-Best Series Reverse Osmosis

2,000 to 14,400 GPD Capacity

Applications



HVAC (Boiler Feed Water)



Foodservice & Hospitality



Car Wash

Features & Benefits

- ✓ **4" x 40" Low-Energy TFC Membranes** – 98% maximum TDS rejection. Perfect for a variety of rugged feed water conditions.
- ✓ **Fully programmable controller with backlit display** – Allows for complete control over your RO system's performance
- ✓ **Smooth, Quiet Operation** – Stainless steel, multi-stage centrifugal pumps with plastic impellers
- ✓ **3/4 or 2 HP 230/60 Hz/1 pH motors** – Providing up to 185 PSI pressure (1" inlet) with 5 micron filter
- ✓ **Pre-plumbed, Wired and Assembled** – Turn-key installation
- ✓ **Stainless Steel Membrane Housings**
- ✓ **Stainless Steel Solenoid Valves**
- ✓ **Heavy Duty** – Powder-coated steel cabinet for durability and rust resistance.
- ✓ **Pretreatment Lockout** – Disables RO production during pretreatment regeneration
- ✓ **Compact footprint** with easily accessible components for maintenance and servicing.
- ✓ **Low Pressure Protection** – to protect the pump
- ✓ **Auto Re-Start After Shutdown** – to protect the pump
- ✓ **Waste Recycle** – to reduce waste
- ✓ **Product and Waste Flow Meter** – quickly identify and adjust recovery and product quality
- ✓ **Product TDS meter** – monitor product quality
- ✓ **Individually tested and preserved at the factory**

Pre-treatment Solutions Available. Pre-treatment of feed water protects and extends the life of the purification. We offer complete pretreatment capabilities that include iron filters, sediment removal, water softeners, chlorine filters and antiscalant.

Specifications

Model	R1F40-BEST	R2F40-BEST	R3F40-BEST	R4F40-BEST	R5F40-BEST	R6F40-BEST	R8F40-BEST
Part Number	13000341	13000342	13000343	13000344	13000345	13000346	13000348
Nominal Capacity	2,000 GPD (1.4 gpm)	3,900 GPD (3.8 gpm)	5,600 GPD (3.9 gpm)	7,500 GPD (5.2 gpm)	9,500 GPD (6.6 gpm)	10,800 GPD (7.5 gpm)	14,400 GPD (10 gpm)
Membranes (No. & Size)	1 – 4" x 40"	2 – 4" x 40"	3 – 4" x 40"	4 – 4" x 40"	5 – 4" x 40"	6 – 4" x 40"	8 – 4" x 40"
Operating Pressure (psi)	50-175	50-175	50-175	50-175	50-175	50-175	50-175
Recovery*	up to 75%	up to 75%	up to 75%	up to 75%	up to 75%	up to 75%	up to 75%
Typical Rejection**	98%	98%	98%	98%	98%	98%	98%
Max Feed Temperature	113°F (45°C)	113°F (45°C)	113°F (45°C)	113°F (45°C)	113°F (45°C)	113°F (45°C)	113°F (45°C)
Feed pH Range	2-11	2-11	2-11	2-11	2-11	2-11	2-11
Max Chlorine***	< 0.1 ppm	< 0.1 ppm	< 0.1 ppm	< 0.1 ppm	< 0.1 ppm	< 0.1 ppm	< 0.1 ppm
Max TDS	2,000	2,000	2,000	2,000	2,000	2,000	2,000
Electrical	220 60Hz, 1-phase	220 60Hz, 1-phase	220 60Hz, 1-phase	220 60Hz, 1-phase	220 60Hz, 1-phase	220 60Hz, 1-phase	220 60Hz, 1-phase
Motor	3/4 HP	3/4 HP	3/4 HP	2 HP	2 HP	2 HP	2 HP
Shipping Weight (lbs.)	195	220	245	275	300	325	350

* Ships with flow control to receive approximately 50% recovery.

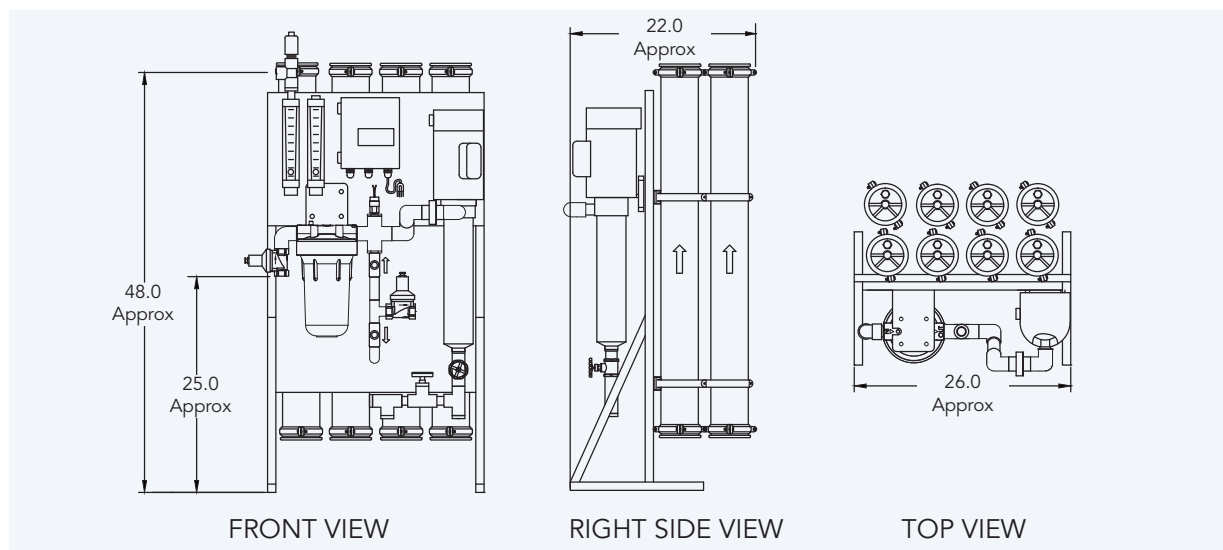
** RO Performance may vary depending on feed water characteristics.

*** Please ensure carbon filter is replaced regularly to ensure feed water remains dechlorinated for proper performance.

Please see manual and online ordering system for a complete service parts list and pricing.

Please contact eci@ecowater.com to learn more about our offering for both pressurized and atmospheric storage and delivery solutions.

Dimensions



For speedy quotes or answers to questions, contact us at:

eci@ecowater.com



Specifications subject to change without notice. Orders are subject to acceptance by EcoWater Systems LLC.

5240 Bradco Blvd, Mississauga, ON L4W 1G7 | 800.752.3273

www.eciwater.com | 1890 Woodlane Drive, Woodbury MN 55125 | 800.228.9326 | ©2016. All Rights Reserved.

0602919-CE Rev. B 04/16